

Here is Your **FREE** Pattern!

http://www.fonsandporter.com

Double Nine Patch

Liz Porter used fabrics from her stash to make scrappy Double Nine Patch blocks, and chose a traditional indigo print for the sashing.



QUILT BY Liz Porter. QUILTED BY Ada Troyer family.

PROJECT RATING: EASY

Size: 75" x 87"

Blocks: 42 (9") blocks

MATERIALS

12 fat quarters* assorted medium/dark prints

NOTE: Use more fabrics for a scrappier look.

9 fat quarters* assorted light prints

2¼ yards pink print for blocks and binding

2½ yards blue print for sashing

5½ yards backing fabric

Full-size quilt batting

*fat quarter = 18" x 20"

CUTTING

Measurements include ¼" seam allowances.

From assorted medium/dark print fat quarters, cut a total of:

- 123 (1½"-wide) strips for strip sets.

From assorted light print fat quarters, cut a total of:

- 99 (1½"-wide) strips for strip sets.

From pink print, cut:

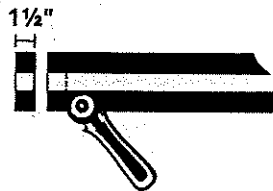
- 16 (3½"-wide) strips. From strips, cut 168 (3½") squares.
- 9 (2¼"-wide) strips for binding.

From blue print, cut:

- 9 (9½"-wide) strips. From strips, cut 97 (9½" x 3½") sashing rectangles.

NINE PATCH UNIT ASSEMBLY

1. Join 2 medium/dark print strips and 1 light print strip as shown in *Strip Set #1 Diagram*. Make 49 Strip Set #1. From strip sets, cut 532 (1½"-wide) #1 segments.

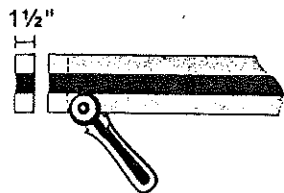


Strip Set #1 Diagram

Watch an online video about strip sets at www.FonsandPorter.com/stripsets



2. Join 2 light print strips and 1 medium/dark print strip as shown in *Strip Set #2 Diagram*. Make 25 Strip Set #2. From strip sets, cut 266 (1½"-wide) #2 segments.



Strip Set #2 Diagram

3. Join 2 #1 segments and 1 #2 segment as shown in *Nine Patch Unit Diagrams*. Make 266 Nine Patch Units.



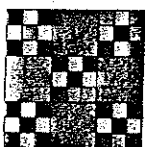
Nine Patch Unit Diagrams

BLOCK ASSEMBLY

1. Lay out 5 Nine Patch Units and 4 pink print squares as shown in *Block Assembly Diagram*.
 2. Join into rows; join rows to complete 1 Double Nine Patch block (*Block Diagram*).
 Make 42 blocks.



Block Assembly Diagram



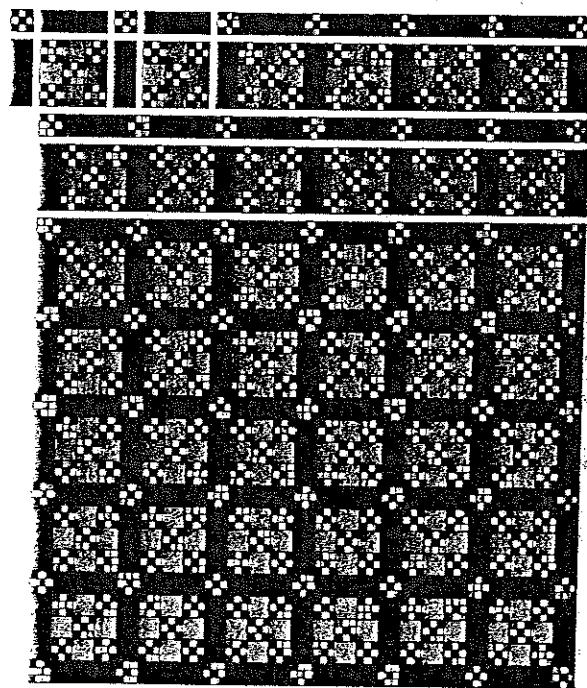
Block Diagram

QUILT ASSEMBLY

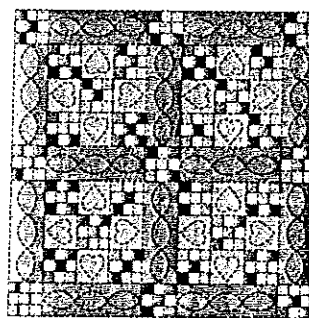
1. Lay out blocks, blue print sashing rectangles, and remaining Nine Patch Units as shown in *Quilt Top Assembly Diagram*.
 2. Join into rows; join rows to complete quilt top.

FINISHING

1. Divide backing into 2 (2¼-yard) lengths. Cut 1 piece in half lengthwise to make 2 narrow panels. Join 1 narrow panel to each side of wider panel; press seam allowances toward narrow panels.
 2. Layer backing, batting, and quilt top; baste. Quilt as desired. Quilt shown was quilted in the ditch, with a heart in each pink square, and with a cable design in sashing rectangles (*Quilting Diagram*).
 3. Join 2¼"-wide pink print strips into 1 continuous piece for straight-grain French-fold binding. Add binding to quilt. ✱



Quilt Top Assembly Diagram



Quilting Diagram